

programmable signal control



With a programmable signal control, reliability is everything. You want to set it and forget it. Period. That's exactly why Lathem reliability is second to none.

The Sonachron is a dual purpose, single circuit program timer—ideal for signaling horns and bells. Or for controlling the ON/OFF status of electrical devices like HVAC or appliances. Its user-friendly, front mounted keypad lets you program the exact minute and weekday(s) of each event. Manual events can be activated at any time by pressing a single key. Press the LUNCH or BREAK key to start unscheduled lunches or breaks at any time. The lunch or break will then automatically end depending on your schedule.

With Lathem reliability and a host of special features, it's no wonder you see Lathem programmable signal controls ringing and sounding horns for schools and workplaces across America.

***IMPROVES ATTENDANCE,
ORGANIZES SCHEDULES AND
INCREASES EFFICIENCY***

DWA-S SONACHRON SIGNAL CONTROL



Security protected keypad to prevent unauthorized access.



LATHEM

FEATURES

- A 24-button keypad allows easy programming and schedule changes
- A 4-digit, user defined security code prevents tampering and unauthorized schedule changes
- The weekly schedule of up to 1,440 events includes the day(s) of the week and the time
- Signal duration can be set from 1 to 99 seconds
- Display can be programmed for 12 or 24 hour format
- Select Daylight Savings Time On or Off
- Internal tone device (optional) for alerting management of sounding bells or horns
- A dip switch can be set for operating the unit as an On/Off control device
- As a control device, the relay latches On or Off according to your schedule
- An internal battery retains memory and timekeeping during power failures lasting up to 7 days
- Press the "Manual" button for emergencies

SPECIFICATIONS

Dimensions: 5.3"H x 9.5"W x 3.3"D

Weight: 3.7 lbs.

Display: LCD

Case: Charcoal Gray Powder Coated

Power: 20 Watts Max

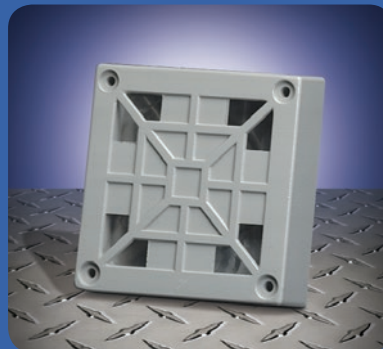
Standby Power: 1.2 Amp Hours, 6V battery (included)

Voltage: 115 AC (200V AC optional)

Time Base: Selectable line frequency of 50 or 60 Hz

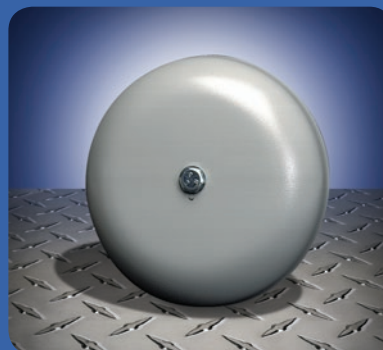
Voltage: 10 Amp Dry Contact

ACCESSORIES



4" Horn

Input Voltage	Rated Current	dBA at 10Feet
115V AC	0.160	95
24V AC	0.750	92



6" AC Vibrating Bell

Input Voltage	Rated Current	dBA at 10Feet
24V AC	0.410	86
115V AC	0.085	86



LATHEM

Lathem Time • Atlanta, Georgia USA • www.lathem.com

This information is subject to change without notice. Copyright © 2014 Lathem Time Corporation. Printed in USA. Lathem and the Lathem logo are registered trademarks of Lathem Time Corporation.